

HOW AN LLM IS TRAINED

(3-STEP MODEL): FROM DATA TO DIALOGUE

STEP 1: DATA COLLECTION (THE LIBRARY)

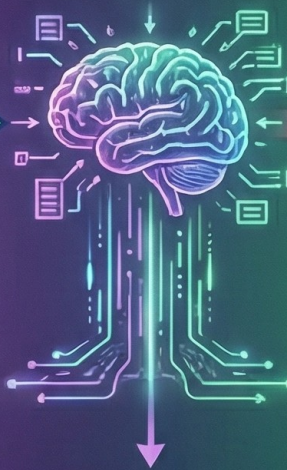


**GATHERING
VAST
AMOUNTS**

GATHERING VAST
AMOUNTS OF
TEXT DATA FROM
BOOKS, WEBSITES,
ARTICLES, ETC.

Like a student
reading every book
in the world.

STEP 2: TRAINING & LEARNING (THE CLASSROOM)



THE MODEL
LEARNS
PATTERNS,
GRAMMAR,
AND FACTS BY
PREDICTING THE
NEXT WORD.

Like a student taking
a million practice
quizzes.

STEP 3: FINE-TUNING & APPLICATION (THE INTERNSHIP)



**ADAPTING
THE MODEL
FOR SPECIFIC
TASKS**

(E.G., ANSWERING
QUESTIONS,
WRITING CODE)
WITH HUMAN
FEEDBACK.

Like a student
getting
specialized
training for a job.

**THE RESULT: A POWERFUL, BUT NOT PERFECT,
LANGUAGE MODEL READY TO ASSIST.**

